



W.TAKEUCHI LAB.

[Monitoring global environment changes and
International technology collaboration]

Department of Humans and Social Systems
Remote Sensing of Environment and Disaster

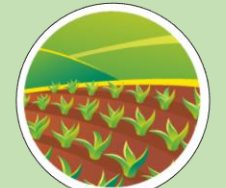
Department of Civil Engineering, Faculty of Engineering

<http://wtlab.iis.u-tokyo.ac.jp/>

Mission: Developing methodologies of global-scale measurement on environmental changes in ...



Cities



Agricultural area

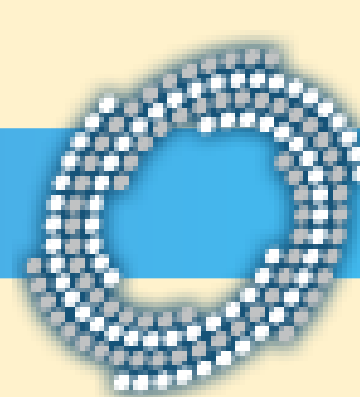


Forested area

Area exposed to
anthropogenic impacts



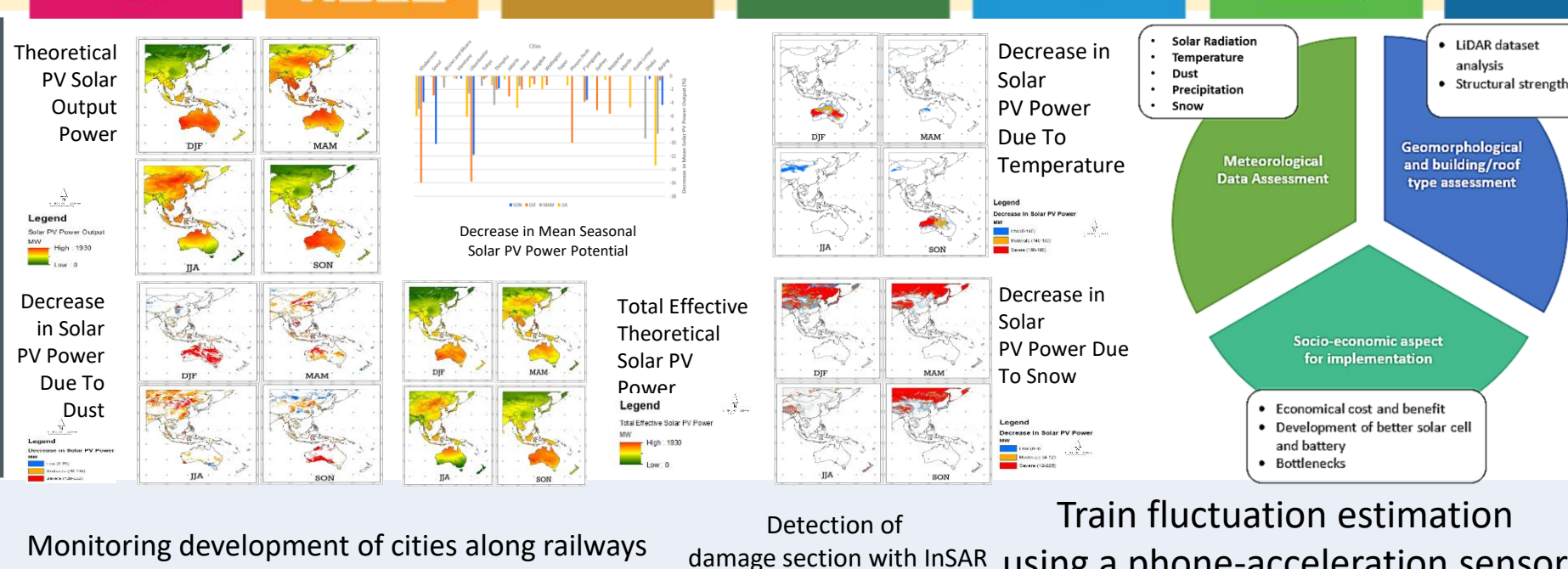
International technology collaboration with Asian countries



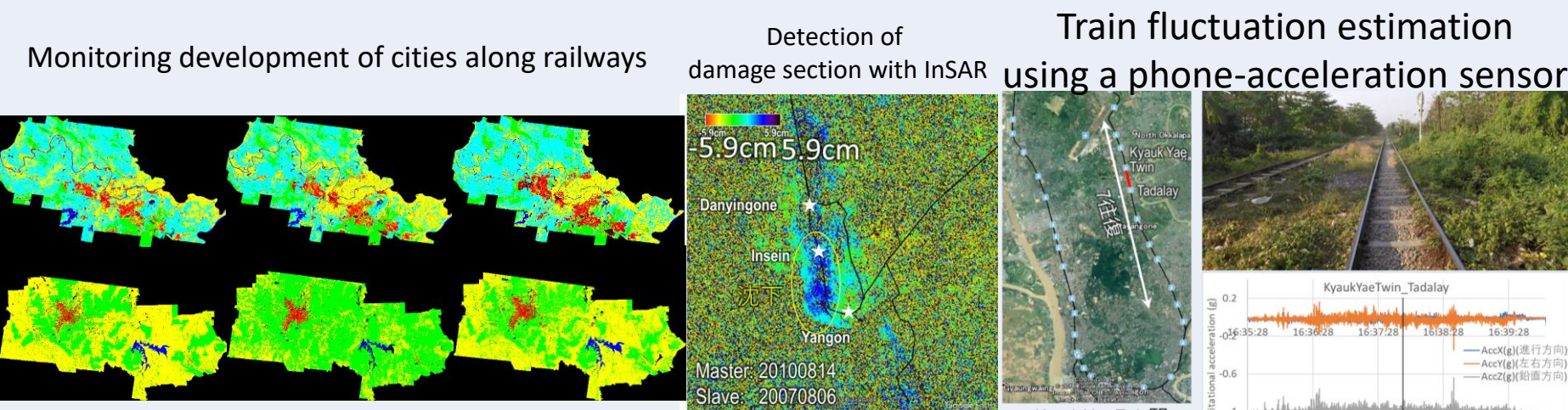
APRSAP
ASIA-PACIFIC REGIONAL
SPACE AGENCY FORUM



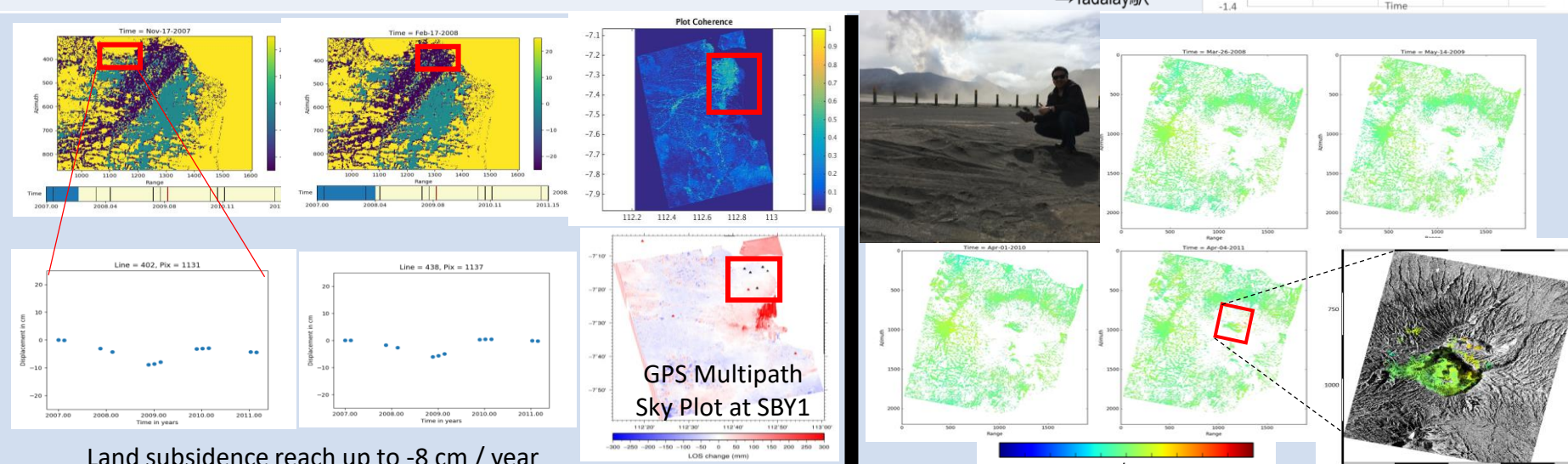
Asian Development Bank



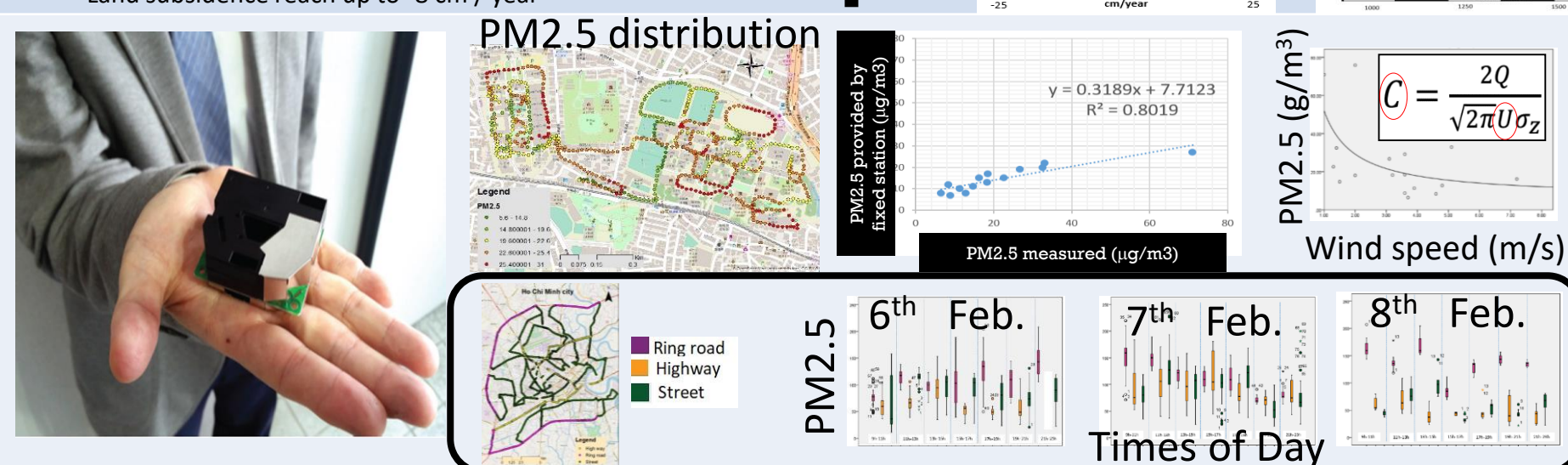
ASSESSMENT OF SOLAR PV
POWER POTENTIAL OVER
ASIA PACIFIC REGION



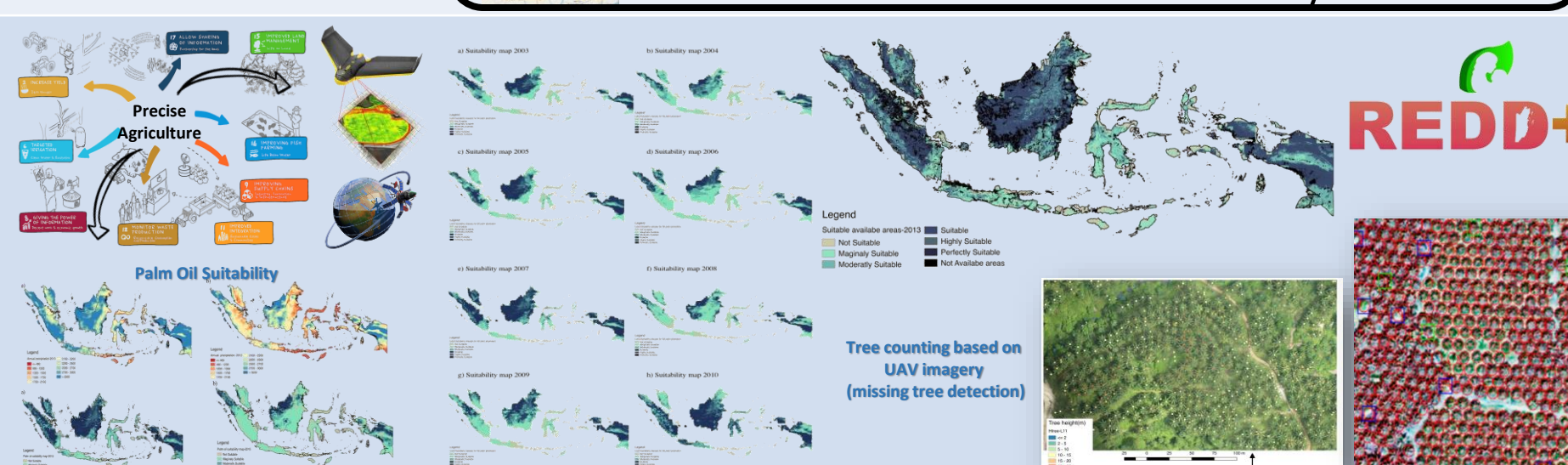
Health Monitoring
of Civil Infrastructure
&
Assessment of its
economic impact on
urban development



Time-Series Interferometric
SAR and GPS analysis in
Indonesia for
Land Subsidence Detection
in Surabaya &
Monitoring active volcano
(Mt. Bromo)



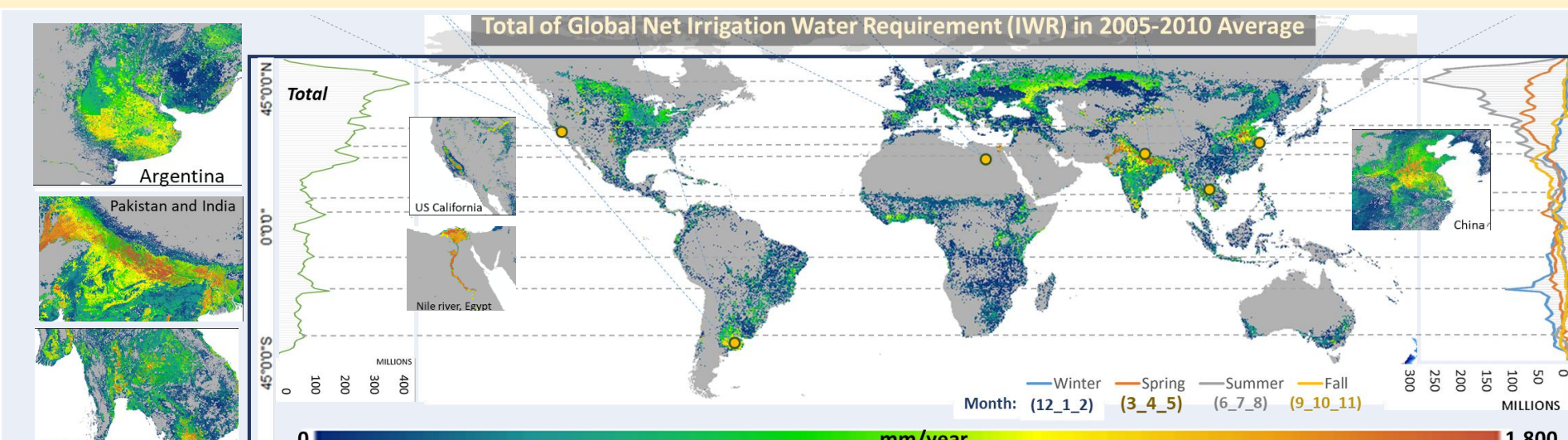
Air pollution
mapping and
personal exposure
assessment by
portable devices for
urban area



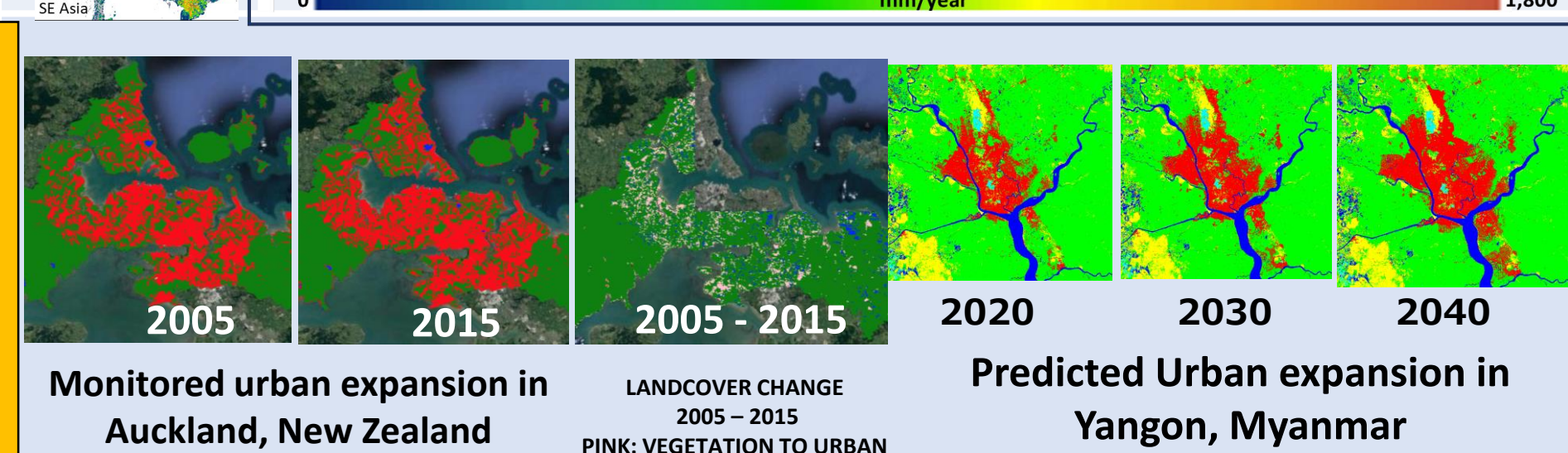
Sustainable Palm Oil
management



Environmental
Monitoring of
Eastern Thailand
Sea



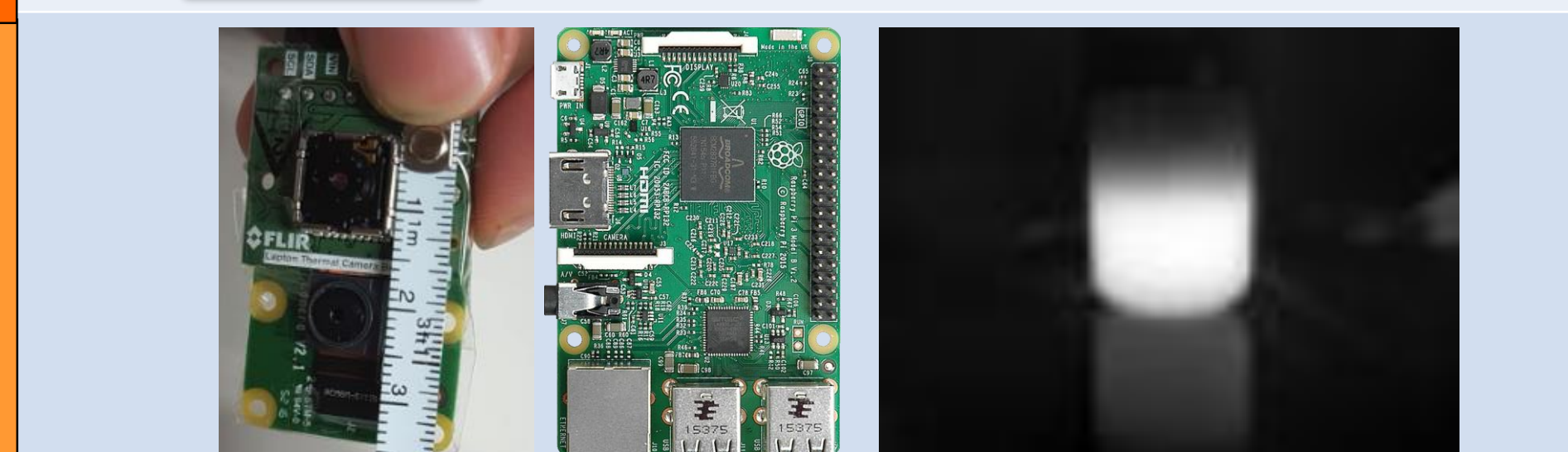
Development of
Global Irrigation
Water Requirement
Based on Multi
Remote Sensing
Data Integration



Monitoring/Modeling
of urban expansion
status



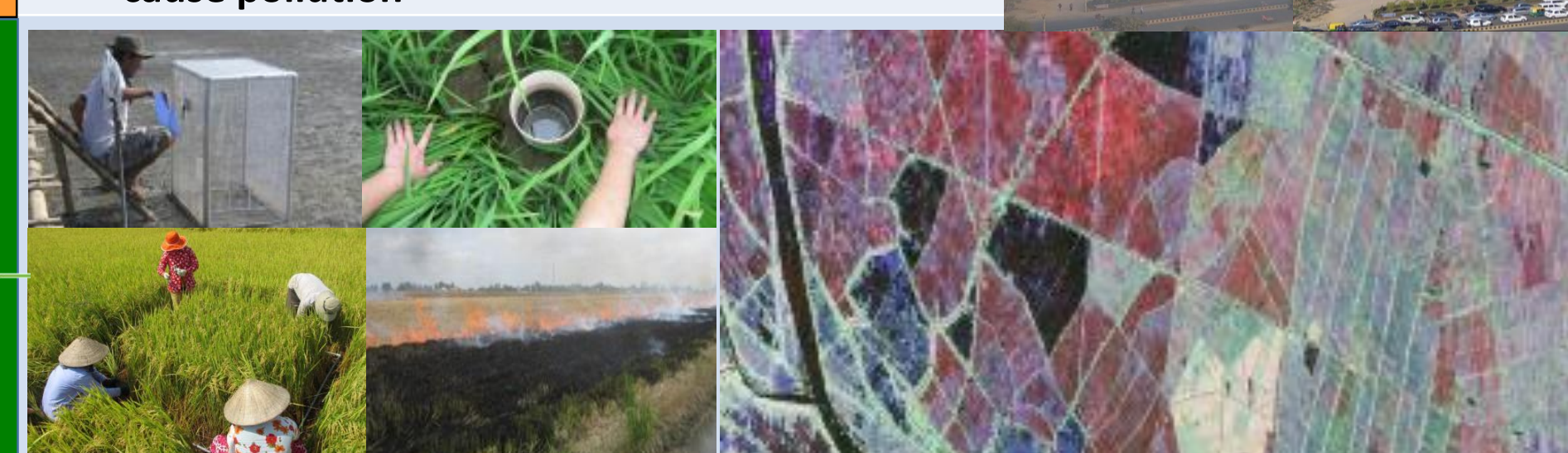
3D Reconstruction
from Images and
LiDAR for
Infrastructure
Health Monitoring



Infrared Camera
System based on
Open Source
Hardware



Impact of socio-
economic
development on
urban air quality in
India



Regional/global
evaluation
of GHGs emission
from tropical rice
paddies



Detection of
forest fire by
Himawari-8 imager
with high temporal
resolution

